



Smallest suction excavator
for inner-city civil engineering

THE DINOCITY



Big performance for a small power pack

More efficient cable and line installation. No ifs, no buts.

Specialist in small construction sites

No street too narrow, no construction site too critical: The MTS **DINOCITY** was specially developed for such requirements, which civil engineering companies must confront in inner-city areas today. Traditional 3 or 4-axle models are too large or too heavy for construction sites on footpaths, complex road layouts, narrow alleys and pedestrian zones. Not least because there is already a significant density of sensitive supply infrastructure such as water and gas pipes, electricity and telecommunications cables here.

Whether as the perfect addition to an existing vehicle fleet or as a first investment in professional suction technology – the **DINOCITY** meets the challenges of economic efficiency and easy operation.

Areas of application

With our advanced suction excavator types, we offer exceptionally efficient solutions for infrastructure, environment and disposal. From exposing lines for gas, water, telephone, etc. through emergency service in the event of a burst pipe, sucking up contaminated material, cleaning trenches, sucking up sludge and solid material in sewers or from ponds and habitats to tree and root treatment using soil replacement without damaging the root system – there are no limits to the possible uses.

Revolution in the smallest of spaces

The **DINOCITY** combines functionality and design



Compact. Manoeuvrable. High suction.

With its unbeatable manoeuvrability and powerful suction performance, our latest **DINOCITY** can operate optimally in confined spaces: Extraction of the materials produced is done safely, easily and without the risk of damaging lines or cables, as happens time and again when traditional diggers are used. The number of cities in which diggers can no longer be used at all is increasing as a result. In comparison with conventional digging by hand, the compact but technically fully equipped suction excavator is twelve times quicker and more effective.

Unique in performance and innovation.

Conventional suction systems on 2-axle vehicles in the 7.5 t model often lack suction power and sufficient compressor capacity for challenging removal work. Not least, their legal vehicle load capacity is insufficient. That's why we have also adapted our market-leading dual-fan technology for our smallest suction excavator: With a fan output of 145 kW, the **DINOCITY** has the highest suction capacity in its class.

In addition, we supply significantly more decompaction capacity in comparison with conventional systems thanks to a high-performance air compressor with an output of up to 4.5 m³/min for the operation of professional pneumatic tools such as pneumatic spades, compressed air spades and demolition lances for all removal work.

DINOCITY – At a glance

The innovative system for a decisive advantage



Equipment and technical parameters:

- Height: 3.3 m; Length 7.0 m (Volvo FL); Short wheelbase: 3.8 m
- Container: 3,5 m³
- Empty weight: 13.8 t (VOLVO FL hydrostat)
- More than 4 t legal vehicle load capacity (e.g. >2.6 m³ of sand)
- Large size suction hose diameter d = 20 cm for sucking up coarser earth materials
- 4.5 m³/min, 8 bar air compressor for operating professional pneumatic tools such as pneumatic spades, compressed air spades and demolition lances
- Dual-fan technology: Variably adjustable suction capacity up to the highest suction capacity in its class
- State-of-the-art HMI interface
- New rear cover closure system
- Installation of the compressed air hose reels on the left and/or right
- Centre-mounted, stable force arm (EVOARM) for working to the left and right of the vehicle
- Remote control for easy operation of the power arm and the emptying functions (optionally with hydrostat)
- High level of soundproofing
- Simple dumping of the suction material into big bags for clean deposit and convenient removal
- Professional suction superstructure on all truck carrier vehicles from 12-16 t



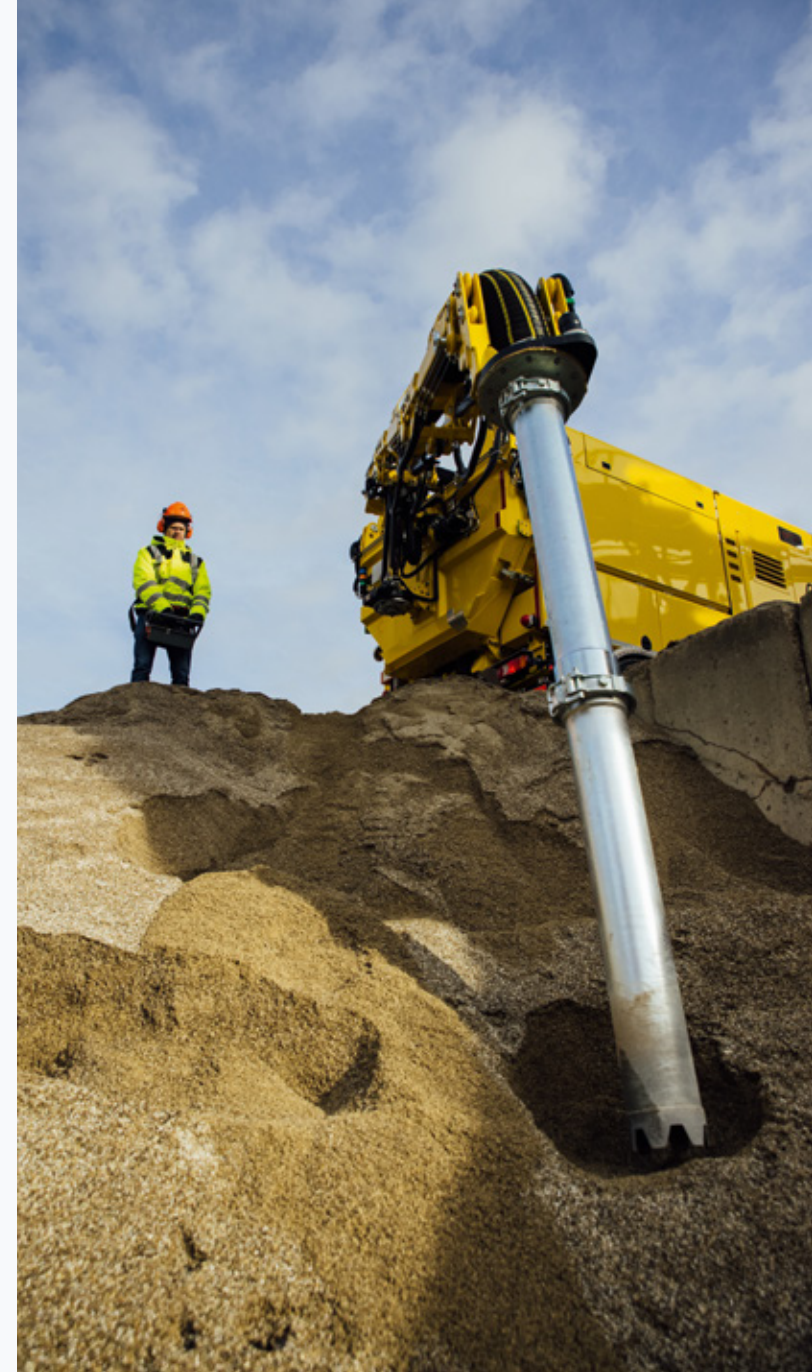
On the road with a big boom arm

New standard for improved stability



The MTS EVOARM:

- Significantly increased action radius & reach: therefore also suitable for working under bridges and in trenches as well as vertically upward
- Force arm mounted on a centre console with the option of working to the left and right of the vehicle at the edge of the road
- Suction pipe remains coupled to the force arm and does not have to be mounted and removed for transportation
- Stable force arm for working with two extension pipes
- IKE suction pipe system





Efficient & environmentally friendly

Optimised airflow for economical working

Environmentally friendly. Naturally.

The latest city suction excavator has also been optimised when it comes to environmental performance and can impress during operation with significantly lower fuel consumption and reduced noise pollution, which are increasingly important criteria for inner-city use.

Innovative airflow principle

- ☞ Best suction capacity in its class
- ☞ Optimised airflow with maximum physical separating function
- ☞ Lowest filter load owing to even air distribution and innovative dedusting system
- ☞ Dedusting of the dust filter possible even without compressor function
- ☞ Up to 10% higher filter capacity for even more suction capacity
- ☞ Gentle tensioning system for the fan system, longer belt service life

Material disposal made easy

Well thought-out solutions for every construction site

Intelligent handling of the suction material

Deposit and removal of materials present major logistical challenges on many construction sites. Emptying of the extracted material into big bags ensures a clean construction site and easier removal at a later point in time using a grabber vehicle or crane tipper.

In addition to traditional tipping onto the ground, the material can also be conveniently tipped into depressions and low skip containers and driven off at a later point in time.



Well thought-out for improved ease of use

- Easy servicing thanks to optimised configuration of the technical components
- Tool box: Mounted on both sides with large storage volumes
- Remote control for all machine functions (optionally with hydrostat)
- Filter chamber can be emptied at the same time as the main chamber – quick and safe
- New emptying system: Complete, extremely easy emptying
- Retractable underrun protection and materials slide for clean emptying

Our DINO fleet for maximum suction efficiency



DINOCITY
The City Racer



DINO4.5
For Urban Professionals



DINO6
Universal & Flexible



DINO8
Universal Workhorse



DINO12
Big Capacity Machine



DINOTRIPLE
Triple Suction Force



MTS Mobile Tiefbau Saugsysteme GmbH Experts in suction technology

MTS Mobile Tiefbau
Saugsysteme GmbH
Siegfried-Jantzer-Straße 5-7
D-76726 Germersheim

Tel: +49 (0) 7274 500 60-0
Fax: +49 (0) 7274 500 60 18
E-Mail: info@saugbagger.com
www.SAUGBAGGER.com

MTS Mobile Tiefbau Saugsysteme GmbH, with its headquarters in Germersheim, has specialised in the development and production of innovative suction excavators and mobile suction systems for more than 22 years. The suction excavator market was originally limited to inner-city civil engineering. Ground-breaking innovations in suction technology – our patented airflow principle, market-leading multi-fan technology and the development of hydraulic force arms for guidance of the suction hose – have allowed numerous new areas of application in environment, industry and renovation to be opened up.

Today, MTS supplies a multitude of satisfied customers in Germany and in more than 42 countries. We guarantee maximum know-how and availability of spare parts directly on site for our customers through the development of service bases within Germany and a carefully selected international sales and service network.

